

Hardware Setup

This document describes how to install Pre-View and set up your camera for remote operation enabling you to image and visualise your framing jobs.

Packing List

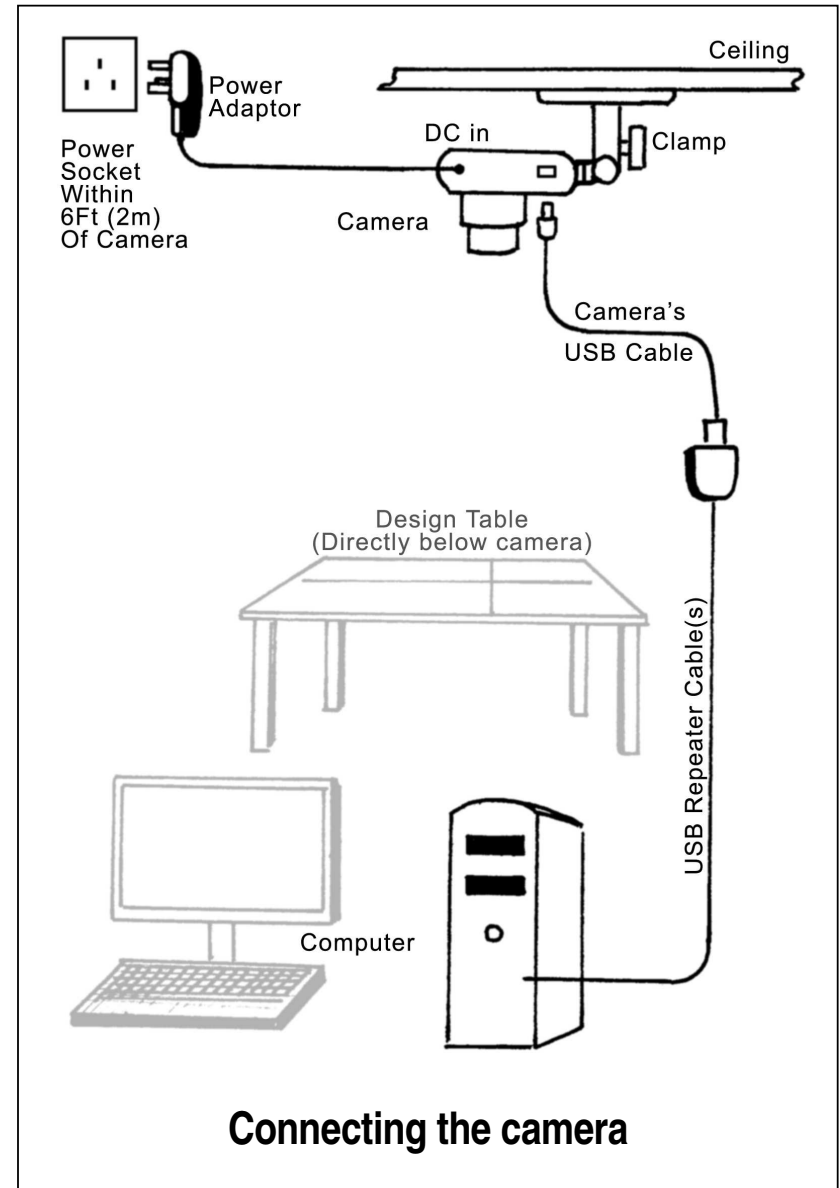
- Canon Camera with the necessary remote capture ability
- Two USB repeater cables
- Power adaptor
- Camera mounting bracket
- Pre-View Software on CD

Camera Settings

Unpack the camera and fit the batteries and memory card according to the manufacturer's instructions. If the batteries are discharged (as is often the case), plug in the power adaptor and test that the camera is working.

Use the camera's menu to navigate to **Auto Power Down** and set it to **OFF**

Slide the Mode Switch to Playback Mode



Positioning And Mounting The Camera



Ceiling Mounted Camera

Ideally, the camera should be positioned vertically above the centre of the design table, and you will need to provide a mains power socket within 2m of this location. If

the camera cannot be mounted on the ceiling, then another means of support should be constructed.

Mark the centre of your design area and use a plumb line to find the position for the camera directly above. Remember that the camera should be positioned so that pictures are taken from the customer's point of view, in other words, the bottom of the camera facing the customer.

Plug the power adaptor provided into the mains socket and connect it to the camera, but do not switch on at this stage, also insert the camera's USB cable connector.

Do not attempt to connect to your computer at this stage.

Installing the Software

In order to visualise captured images from your camera, you must first install the software.

Camera Drivers

Install the software on the Canon Digital Camera Solutions CD. Take the Easy Installation option.

Pre-View

Place the Pre-View CD in the drive and install the visualisation software.

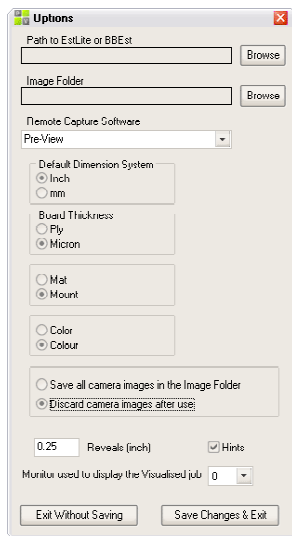
Connections

Use the USB repeater cable(s) to connect between the camera's USB cable and a USB socket on your computer. Switch on the power adaptor then switch on your camera. The camera will now be recognised by your computer and a box may appear asking you to **Select the program to launch this action** – just cancel for now.



Cancel this box

Calibrating



When Pre-View is first run, click on Options. A number of program settings can be configured on this screen, but for now, ensure that: -

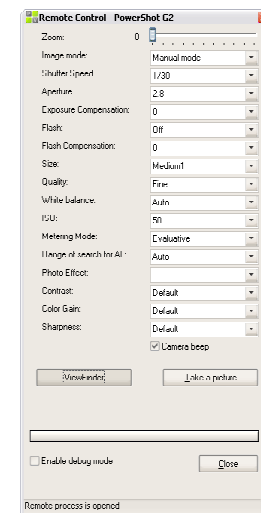
- ✓ **Remote Capture Software** is set to Pre-View
- ✓ Set your dimension and spelling preferences
- ✓ Select **Discard camera images after use**

Click on **Save Changes & Exit**.

In the main Pre-View screen, click on the **From Camera** button to bring up the camera capture window. This will activate your camera and establish the link between it and your computer. The linking process must be complete (can take 10 – 25 seconds) before the camera can be used.

Initial Camera Capture settings

- Image Mode: Manual
- Flash: Off
- Size: Medium
- Quality: Fine
- Aperture: Wide, usually 2.8
- Shutter Speed 1/30
- White Balance: Auto



It is vital that the camera is angled so that the lens is perfectly vertical to the plane of the design table. This can be achieved in two ways:

Rectangle Method

Place a large rectangular card, big enough to fill most of the viewfinder, on the table, and adjust the angle of the camera to square up the image of the card within the on-screen viewfinder. If the camera is not angled correctly, the sides of the card will appear to converge when viewed on your screen.

Getting the sides of the card to appear perfectly square on the screen is a time consuming and delicate operation, but getting it right is important as it impacts the quality of your visualisations.

Mirror method

Place a sheet of mirror glass flat on the table and zoom in to the maximum extent. Now adjust the angle of the camera so that the lens is positioned at the centre of the viewfinder image.

Image Quality

Select a subject with tones ranging from light to dark. By trial and error, use the **Take Picture** button, at different shutter speeds to find the most suitable exposure setting. Also, it can sometimes

be useful to experiment with the various **white balance** settings to obtain the best quality.

During this trial and error period, a dialog box may appear asking you to set the image scale, if so, just close the box without making any entry.

Zoom

When your system is properly calibrated, Pre-View will automatically calculate dimensions from all the images that you take using the remote control feature. This means that you will rarely, if ever, have to measure the size of the subject. The more accurately you carry out the following procedure, the more you can rely on the dimensions that Pre-View sends to your frame pricing software.

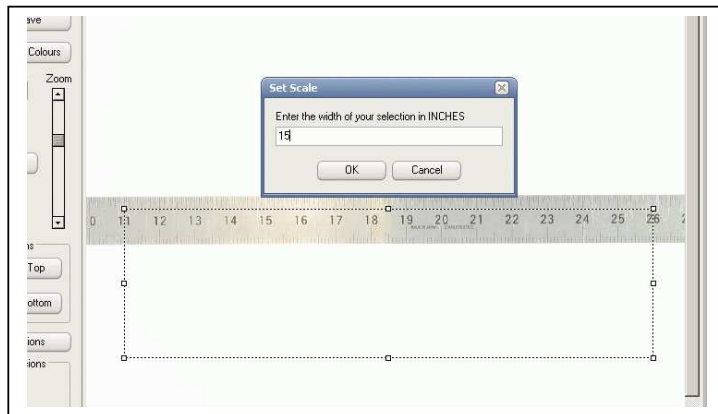
Start by laying out a measuring scale horizontally on the design table so that it will pass through the centre of the on-screen image, and is long enough to extend approximately from edge to edge of the image when zoomed out to the widest.

Take a picture at each zoom setting, starting at 0 (zero) up to the maximum zoom setting available.

Close the **Remote Control** screen.

Choose each image in turn (by clicking on the tabs along the top of the image area) and carry out this procedure on each: -

If you are not prompted to set the scale, click the **Set Image Scale** button and drag out a box with your mouse so that the vertical sides fall accurately on two widely separated measurements within the image. (If you are not happy with your selection, just click the **Set Image Scale** again and make a new selection.) Take the difference between the two measurements



and enter this number into the **Set Scale** dialog box.

Help

While Pre-View is running, help is always available by clicking the **Help** button on the main screen, on any other screen press the **F1** key. As well as reading the text, you can point-and-click on the help screen images to get more information.

To get you started there are three tutorial files that can be accessed via the main screen of the help file. To run a tutorial, click on the appropriate line.

[Visualisation With Favourites \(Flash Animation\)](#)

[Add Moulding to List \(Flash Animation\)](#)

[Squaring a skewed needlework \(Flash Animation\)](#)

Troubleshooting

Camera locked with lens extended and not responding

Close down Pre-View, unplug the camera's USB cable from the computer for about 30 seconds, during which time the lens should retract. Insert USB cable and re-run Pre-View.

Camera switches itself off while Remote Control window is open

Disconnect USB cable from camera and switch it on. Using the camera's menu navigate to Automatic Power Down and set it to **OFF**.

Email: support@pre-view.biz

Telephone:

From UK - 028 9024 7878

From ROI - 048 9024 7878

From outside UK – 044 28 9024 7878

Skype: Scenes